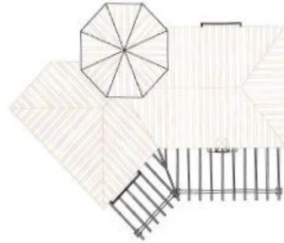


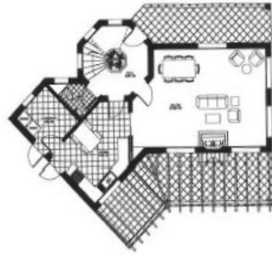
VILLA GAVIOTA. Plot 2 • Parcela 2



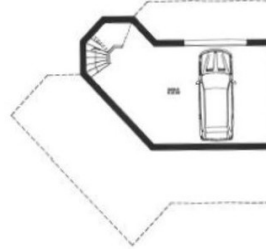
TERRACES • PLANTA DE CUBIERTAS



GROUND FLOOR • PLANTA BAJA



FIRST FLOOR • PLANTA ALTA




GARAGE FLOOR • PLANTA GARAGE




Plot for sale in Punta Chullera

Reference: R3586297

75,000€

521m² 

225m² 

BEAUTIFUL PLOT OF 530m² SITUATED 200 METERS FROM THE BEACH, WITH PROJECT INCLUDED AND SOUTH ORIENTATION. Enjoy beautiful views of the sea and the countryside, with direct access to magnificent beaches in just 3 minutes walking. Located in an urbanization with all supplies. The projected housing for this plot has 190m² interior plus 67 m² of terraces and pool. Located between the Sotogrande urbanization and the attractive Puerto Duquesa, both 5 minutes away by car and where you will find all kinds of shops and entertainment venues. Excellent opportunity, recommended visit!!!